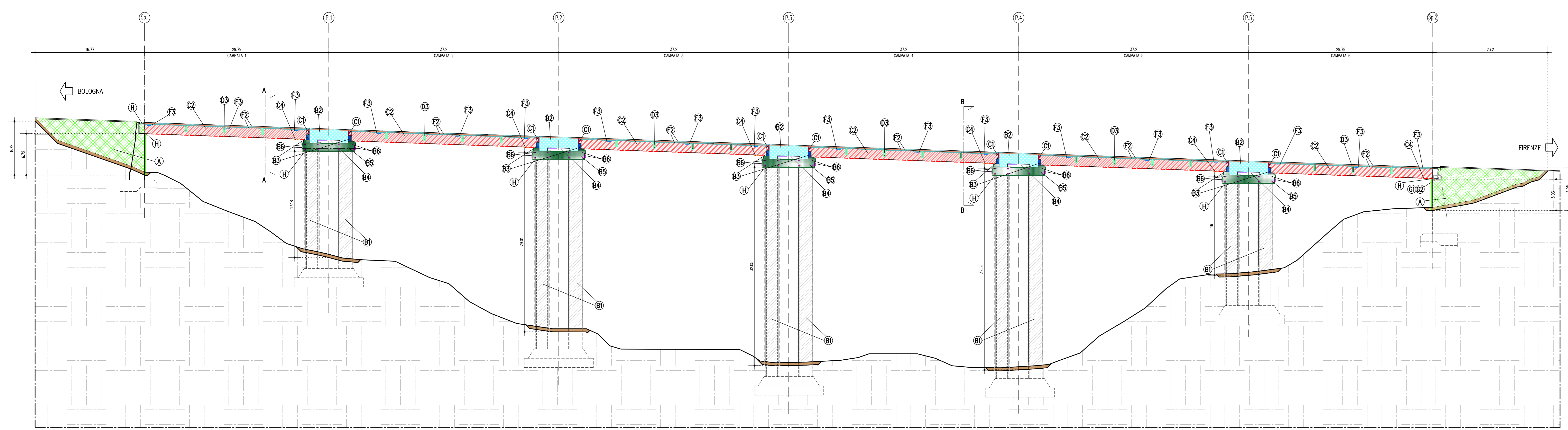


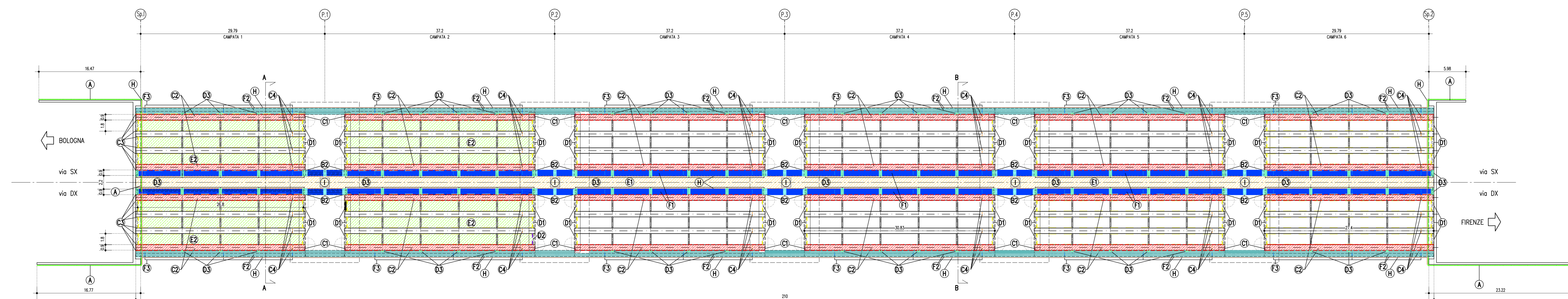
PROSPETTO PROFILO LONGITUDINALE

scala 1:250



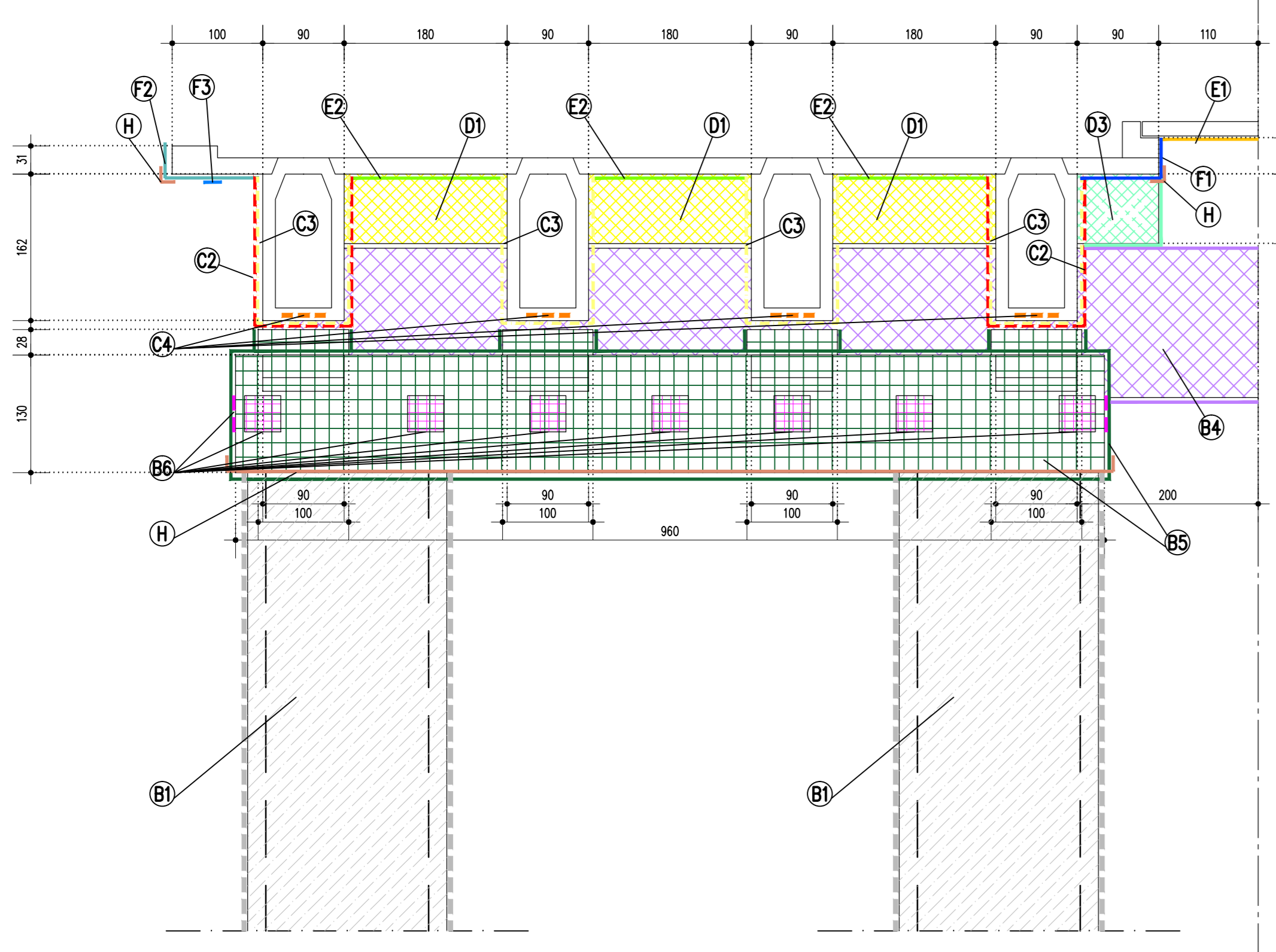
PLANIMETRIA GENERALE

scala 1:250



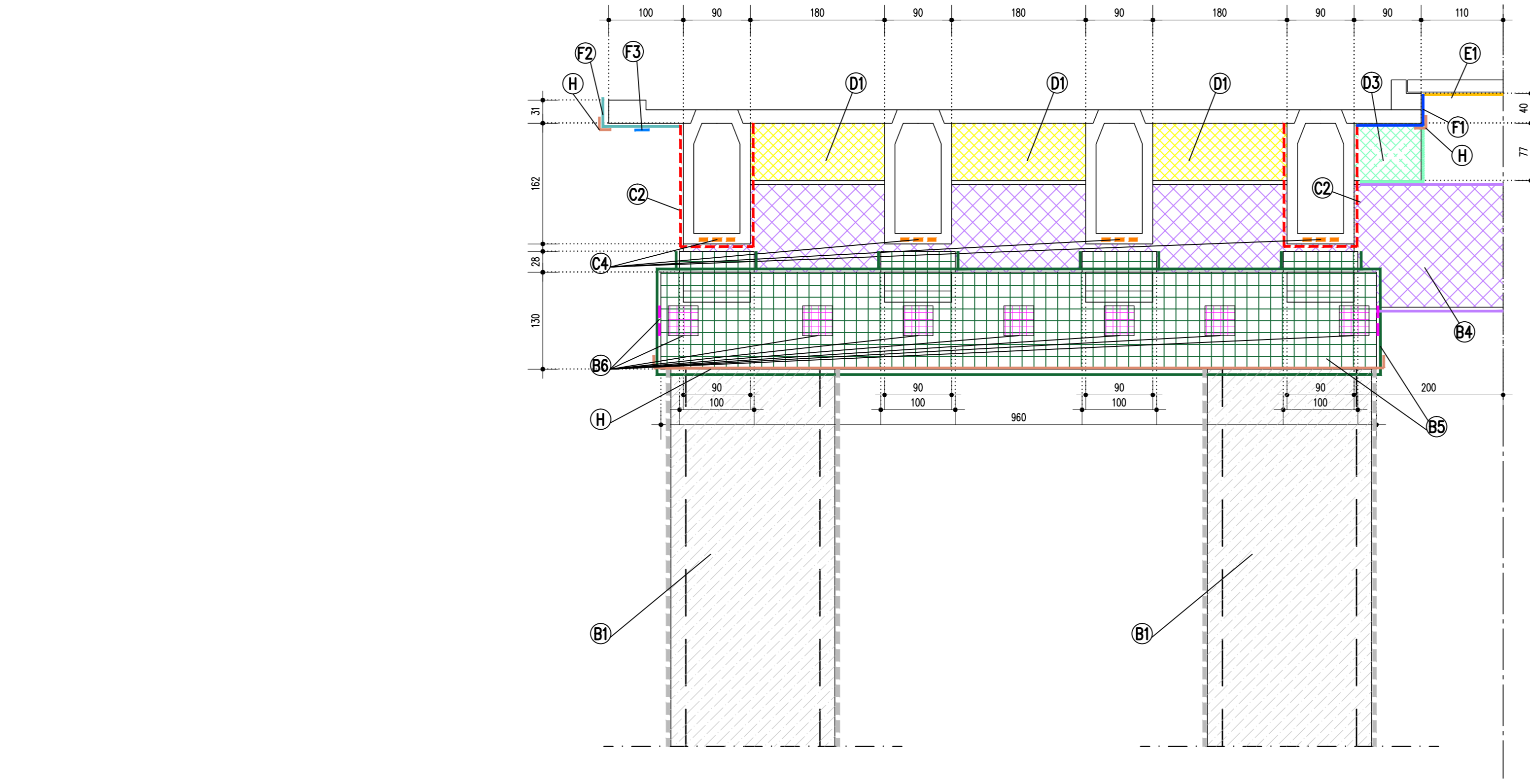
SEZIONE TRASVERSALE A-A

scala 1:50



SEZIONE TRASVERSALE B-B

scala 1:50



Per quanto concerne l'intervento T si rimanda agli elaborati STR-011 e STR-012.

Table with 2 columns: Material Name and Characteristics. Lists materials like concrete, asphalt, and reinforcement bars with their specific properties and standards.

Large table with 2 main columns: DESCRIZIONE INTERVENTI (Intervention Description) and INTERVENTI (Interventions). Lists various types of interventions (A, B, C, D, E, F, G, H, I, J) and their detailed descriptions, including materials and construction methods.

Project information block including the logo for 'autostrade per l'Italia', the project name 'AUTOSTRADA (A1) : MILANO - NAPOLI', and the specific intervention details: 'TRATTO : VADO - FIRENZE NORD INTERVENTI DI RIPRISTINO DEL VIADOTTO RAGNANA OPERA 1826 - progr.km 272+216'.

Technical drawing header and footer containing the title 'INTERVENTI', 'UBICAZIONE INTERVENTI E RIPRISTINO TAVOLA 1 DI 2', and various project management and approval stamps.